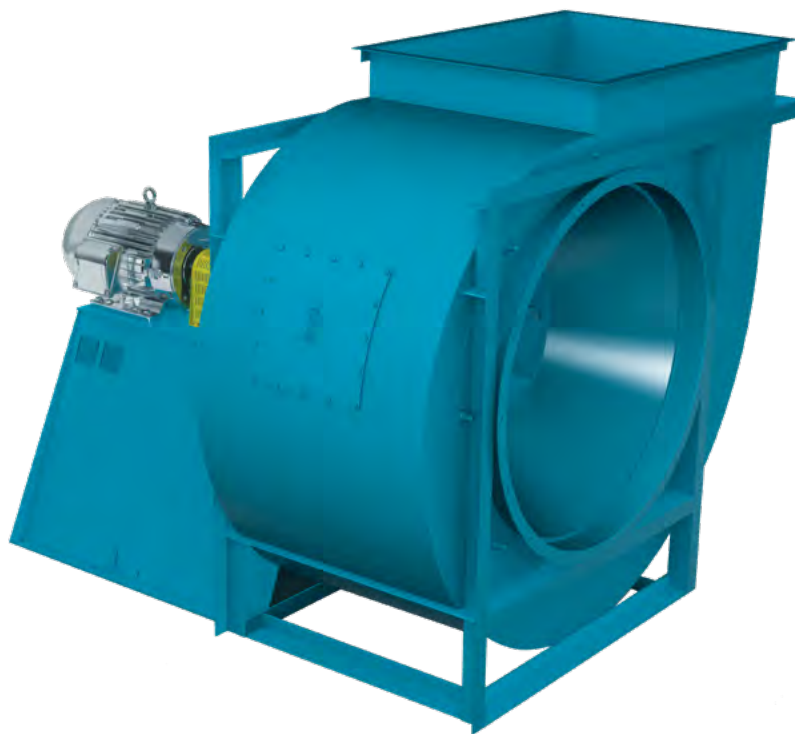




INDUSTRIAL PROCESS AND  
COMMERCIAL VENTILATION SYSTEMS



**ETHANOL MARKET**  
AIR MOVING SOLUTIONS



[WWW.TCF.COM](http://WWW.TCF.COM)



## Special Features

Custom features are offered as options to meet specific application requirements. Twin City Fan & Blower takes pride in offering customers many special features required by today's ethanol industry.

- **Stainless Steel Construction**
- **High Temp Construction**
- **Fully Clad Insulated Fans**
- **Spark Resistant Construction**
- **Special Coatings**
- **Vibration Sensors**
- **Bearing RTDs**
- **Inlet Boxes**
- **Disk Type Spacer Coupling**
- **Circulating Oil Systems**
- **Abatement Construction**

## Ethanol Market Fan Applications

The ethanol industry utilizes fans in many different areas of the plant. Each of these custom applications require quality fans designed for durability, ease of maintenance and dependability. Some of the areas where fans are used include:

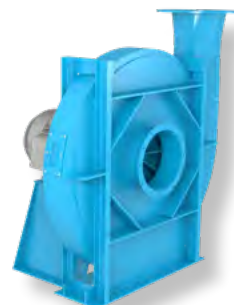
- Dust Collection
- Material Handling
- Dryer Packages
- Combustion Air
- Abatement
- General Ventilation
- Thermal Oxidizers

## Validation & Testing

Every fan that we manufacture undergoes a rigorous testing and validation process to meet the industry requirements for vibration, air and sound performance. In addition, Twin City Fan & Blower tests all fans for structural and mechanical integrity. Our capabilities allow us to perform our testing in our AMCA 210 certified laboratory.



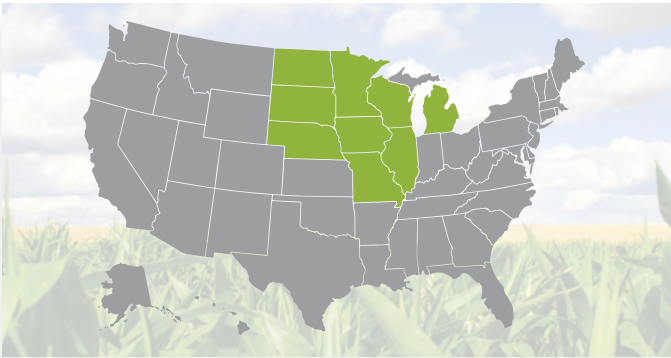
**Model HIB, High Efficiency  
Industrial Backward Curved Fan**



**Model MBR, Heavy-Duty  
Pressure Blower**

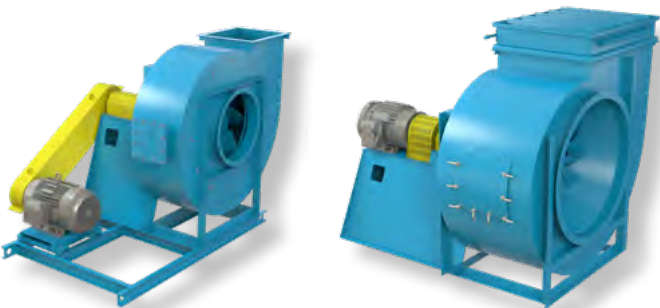
## Ethanol Market Experience

Twin City Fan & Blower has extensive experience providing air movement solutions involving all areas of ethanol processing. We have worked with every major ethanol producer and have fans in over 40 facilities across North America.



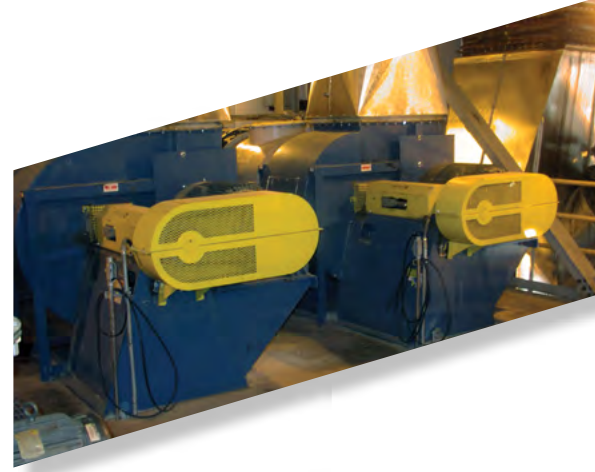
## Repair & Field Service

Twin City Fan & Blower provides fan testing and validation services at our in-house laboratory, as well as on-site. We also offer scheduled maintenance, including balance, alignment and operational training. Twin City Fan & Blower services and repairs all brands and types of fans. The fan services we offer are an extension of our commitment to provide our customers with the highest level of service and support.



Model RBA, Industrial  
Radial Blade Fan

Model BCS, Backward Curved High  
Pressure/Volume Centrifugal Fan



## Common Products (Ethanol Market)

- BAE** - Airfoil Centrifugal Fan
- BC** - Flat-Blade Backward Inclined Centrifugal Fan
- BCN** - Backward Curved Pressure Blower
- BCS** - Backward Curved High Volume/ Pressure Centrifugal Fan
- HIB** - High Efficiency Industrial Backward Curved Fan
- RBA/RBO** - Industrial Radial Blade Fan, Air Handling/ Paddle Impeller
- RTF/HRT** - Radial Tip Fan
- TBNA/TBNS** - Turbo Pressure Blower, Aluminum/ Steel Impeller
- MBR** - Heavy-Duty Pressure Blower, High Pressure Air Handling





# INDUSTRIAL PROCESS AND COMMERCIAL VENTILATION SYSTEMS

CENTRIFUGAL FANS | UTILITY SETS | PLENUM & PLUG FANS | INLINE CENTRIFUGAL FANS  
MIXED FLOW FANS | TUBEAXIAL & VANEAXIAL FANS | WALL MOUNTED FANS | ROOF VENTILATORS  
CENTRIFUGAL ROOF & WALL EXHAUSTERS | CEILING VENTILATORS | GRAVITY VENTILATORS | DUCT BLOWERS  
RADIAL BLADED FANS | RADIAL TIP FANS | HIGH EFFICIENCY INDUSTRIAL FANS | PRESSURE BLOWERS  
LABORATORY EXHAUST FANS | FILTERED SUPPLY FANS | MANCOOLERS | FIBERGLASS FANS | CUSTOM FANS



**TWIN CITY FAN & BLOWER**  
**[WWW.TCF.COM](http://WWW.TCF.COM)**

5959 TRENTON LANE N. | MINNEAPOLIS, MN 55442 | PHONE: 763-551-7600 | FAX: 763-551-7601

©2018-2022 Twin City Fan Companies, Ltd., Minneapolis, MN. All rights reserved. Catalog illustrations cover the general appearance of Twin City Fan & Blower products at the time of publication and we reserve the right to make changes in design and construction at any time without notice.