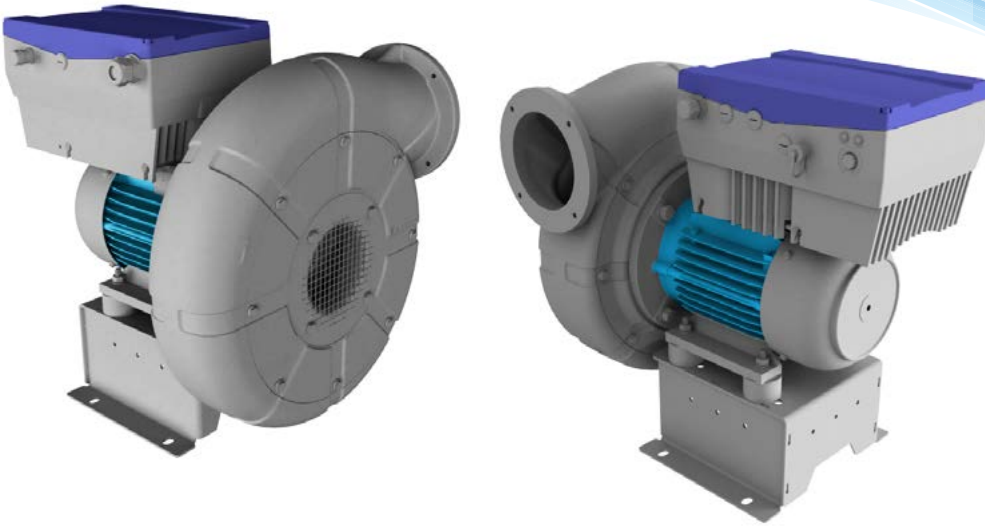


EXTREME: COMPACT, FAST,
VERSATILE, POWERFUL



TCF
TWIN CITY FAN

Elektror
airsystems gmbh

MODELS TXP, TXR, TXS

TX SERIES

»
PRODUCT
Flyer

PROVIDING THE BEST
AND WIDEST SOLUTIONS
IN THE FAN INDUSTRY.
PERIOD.

THE NEW EXTREME PRESSURE BLOWERS

Twin City Fan is proud to announce the TX Series of Extreme Pressure Blowers, engineered and produced by our German partner Elektror Airsystems GmbH. The TX Series of blowers are designed and built to deliver superior performance with a special impeller and cast aluminum or steel housing, driven by motors capable of operating between 5,500 to 15,000 RPM. Compared to conventional belt driven blowers, these compact direct drive blowers achieve the same high pressure and efficiency at $\frac{1}{2}$ - $\frac{1}{3}$ of the physical size. The direct drive also eliminates belt and pulley maintenance, giving our customers years of reliable operation. Combined with the variable frequency drives, the TX Series demonstrates the versatile performance and is suitable for many applications including cooling, heating, conveying, drying, vacuum generation, blowing-off and others.

CHARACTERISTICS

- Heavy-duty cast aluminum or steel housing
- Well-balanced, curved impeller for high efficiency
- Aluminum, steel or stainless steel impeller
- Direct drive

COMPACT SIZE

- Deliver the same performance at $\frac{1}{3}$ of the physical size
- VFD factory mounted directly on the motor
- Different discharge orientations allow flexible installation

DIRECT DRIVE WITH VARIABLE SPEED

- No belts and couplings to maintain
- VFD provides versatile performance at different speed
- Suitable for wide range of applications

SPECIAL MOTORS

- Specially designed motors for high RPM
- Operating at 5,500 to 15,000 RPM
- Long-term reliability and performance

MADE IN GERMANY

- Engineered by Elektror in Germany
- 98 years of experience in engineering since 1923