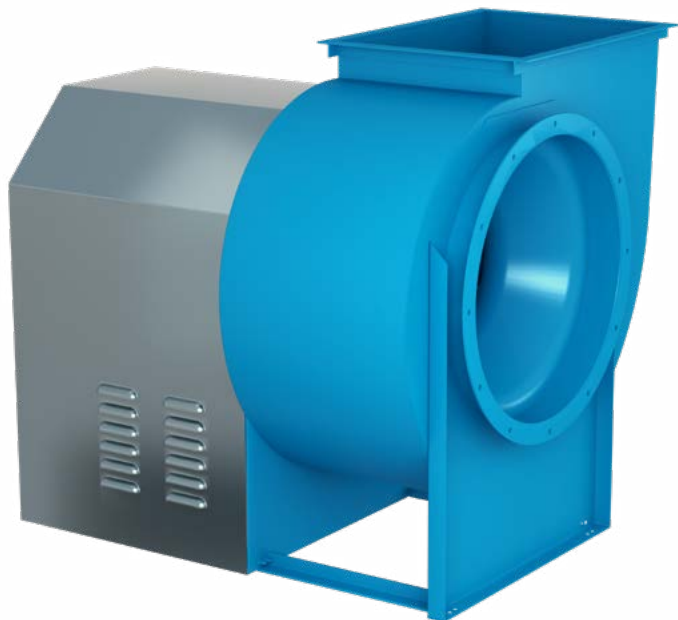




MODEL BCV UTILITY SETS: STOCKED AND READY TO SHIP



Twin City Fan's line of utility ventilating sets is one of the most comprehensive in the industry. We are proudly responding to the quickly rising need for healthcare customers' fan orders in COVID-19 projects. Therefore we have built up Model BCV stock in order to quickly ship fans to create negative pressure rooms for healthcare workers fighting this pandemic.

The backward inclined Model BCV is an excellent choice for general exhaust and supply requirements in both indoor and outdoor alternate care site applications. They are designed to meet AMCA requirements with continuously-welded steel construction and are available with both steel and aluminum wheels. Fan housings are coated with powder coat as standard. Weather covers are also available for protecting the motor and drives in outdoor applications. The Model BCV utility sets are rotatable to seven standard discharge positions.

QUICKSHIP INVENTORY

- Stocked with over 100 BCV fans, Sizes 122 to 365
- Ready to ship within 24-48 hours of an order
- Typical utility set availability is suspended from the QuickShip Program in order to focus on the stocking plan targeted at COVID-19 projects
- TCF is prioritizing all COVID-19 project

MODEL BCV STOCK PERFORMANCE CURVES

