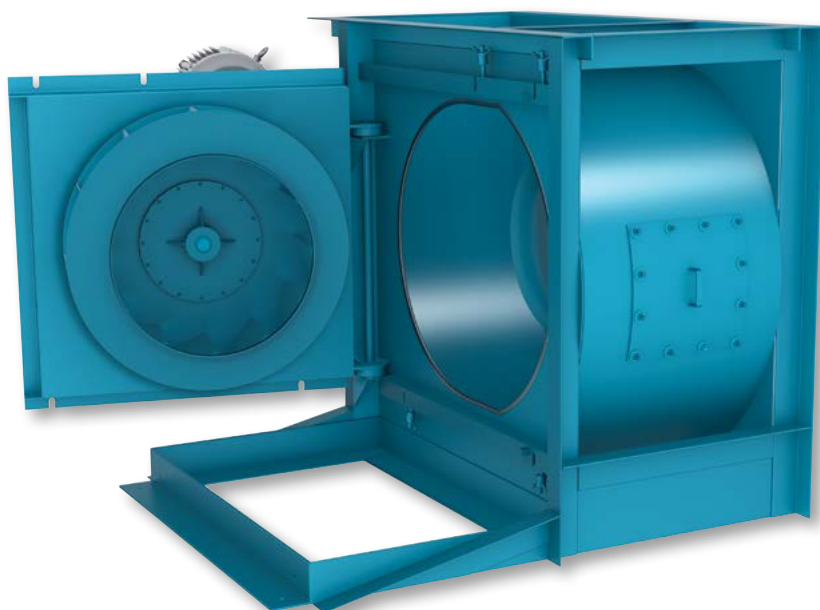


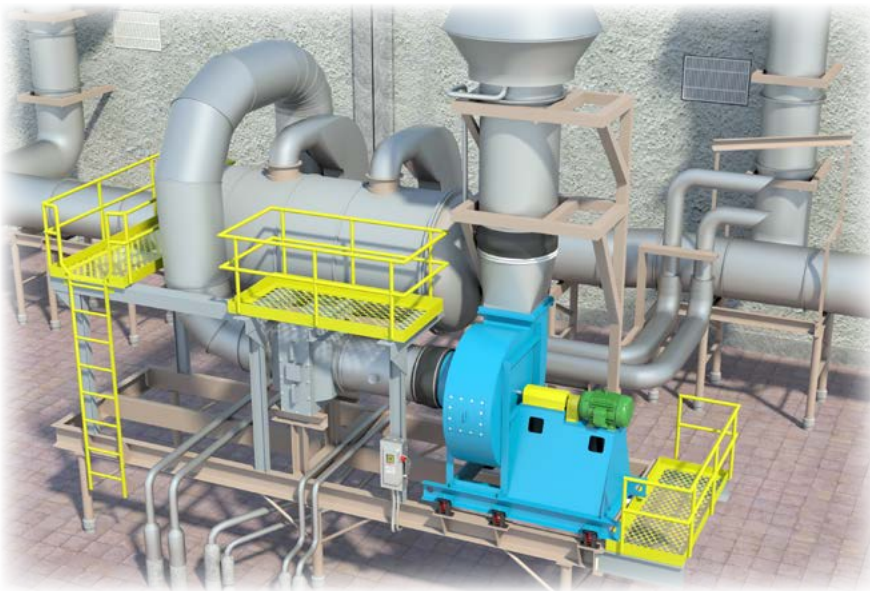


INDUSTRIAL PROCESS AND
COMMERCIAL VENTILATION SYSTEMS

EASY ACCESS INDUSTRIAL EXHAUST FANS



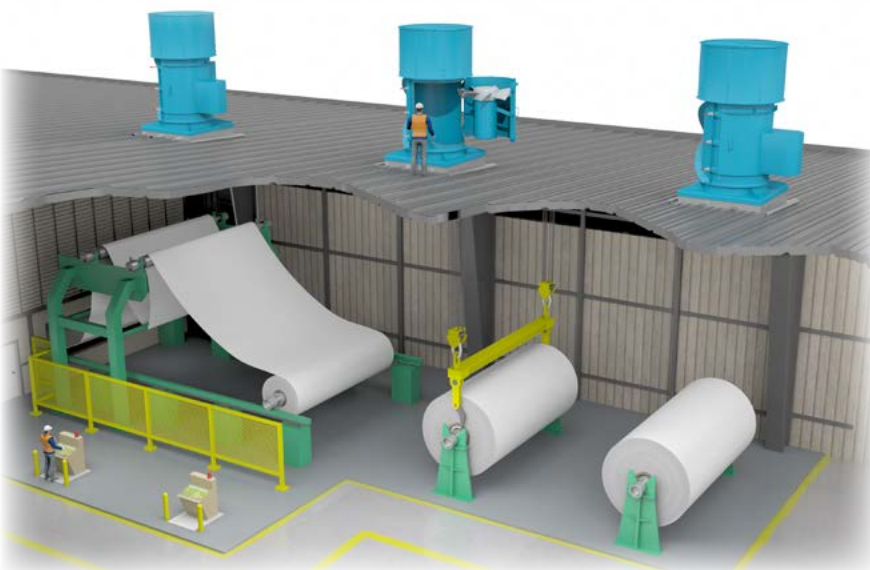
EASY ACCESS FANS



Easy Access Door on Energy Recovery System Fan

Common Applications

- Paint Finishing Systems
- Pulp & Paper Production
- Heat Recovery Steam Generators
- Potash Production
- Slurry Prep Facilities
- Steel & Aluminum Foundries



Paper Mill with Axial Swingouts

Swingout Fans

Swingout fans by Twin City Fan & Blower are the best choice when frequent cleaning, without removal of ductwork, is necessary. Swingout construction is also ideal for systems when short down times are essential. The design provides full access to the impeller and inner casing. The entire impeller/shaft/bearing assembly is mounted on a large swingout door providing easy access to all components outside of the airstream. Twin City Fan & Blower swingout fans can handle the toughest exhaust applications and are available in axial, tubular centrifugal, mixed flow and scroll type centrifugal fans. Swingout construction is available for vertical mounting only.

Swingout Configurations

Centrifugal: Arrangements 4S, 9ST and 9SS
Axial and Inline Centrifugal: Arrangements 4 and 9

Clamshell Fans

Clamshell fans by Twin City Fan & Blower offer many of the advantages of swingout fans at a reduced cost. Doors swing open to provide accessibility to the internal components of the fan for cleaning without removal of ductwork. It is essential to follow safety precautions during cleaning. Heavy-duty hinges, positive locking latches and full gasketing provide a complete seal when doors are closed. An access door provides access to the bearings. Clamshell construction is available for inline centrifugal and axial fans and is used in vertical mount applications, due to the weight of the doors. If bearing, shaft or impeller replacement is required, the fan should be removed from the ductwork or roof to facilitate safe replacement of parts. If replacement of these parts while ducted or on the roof is required, it is recommended to use swingout construction.

Clamshell Configurations

Axial and Inline Centrifugal: Arrangements 4 and 9

Benefits of Easy Access Fans

- Reduced Down Time
- Easy Maintenance
- Fast Cleaning
- Quick Inspection
- Less Labor
- Accelerated Repairs

Centrifugal Fans

Backward inclined and airfoil fans are available with swingouts in sizes 182 through 660 in Class I, II and III construction. The inlet funnel is removable without disturbing the ductwork. Refer to Catalog 300 for SWSI BC/BAF Backward Inclined Airfoil Centrifugal Fans.

Axial/Inline Centrifugal Fans

Tubeaxial, vaneaxial and adjustable pitch vaneaxial swingout fans are available in sizes 21 through 60. Refer to Catalog AX200 for Tubeaxial Fans, Catalog AX100 for Vaneaxial Fans and Catalog AX300 for Adjustable Pitch Vaneaxial Fans.

The TSL Tubular Centrifugal Inline Fan's patented airfoil impeller reduces horsepower and sound levels. Swingout fans are available in sizes 222 through 445 in Class I, II and III construction. Refer to Catalog 1001 for TSL Tubular Centrifugal Inline Fans.

**Patent No. 5,171,128 (impeller), Patent No. 4,775,294 (swingout).*

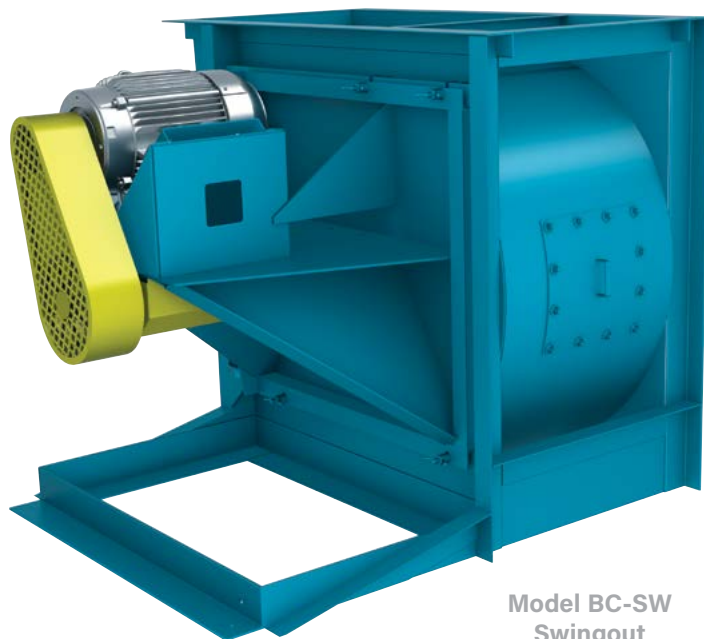
Model QSL Mixed Flow Fan combines the benefits of axial flow and centrifugal flow fans. Swingout construction is available for vertical mounting only. Available on sizes 222 to 445. Refer to Catalog 1060 for QSL Mixed Flow Fans.

Models Available with Swingout Construction

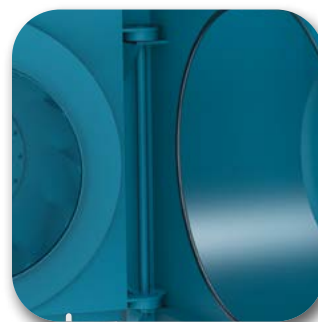
- ATAD
- BAF-SW
- BC-SW
- QSL / QSLR / QSLSH
- TCTA / TCTS
- TCVA / TCVS
- TSL
- TCVX

Construction Features

- Heavy-duty flanged ball bearing hinge system provides door support without the need for a track.
- 200,000 hour L-50 average life bearings are standard.
- Housing is continuously welded, heavy-gauge construction.
- Motor slide base standard on scroll swingout fans.
- Extra heavy T-handles to lock doors for a tight seal.
- Centrifugal Arrangement 9ST is available with a RH or LH door.
- Available as an optional construction, the swingout impeller design allows for the impeller to pivot out of the fan housing for simple cleaning and maintenance. A rod prop is standard with the swingout impeller option to keep the assembly open as well as a lockable hasp.



Model BC-SW
Swingout

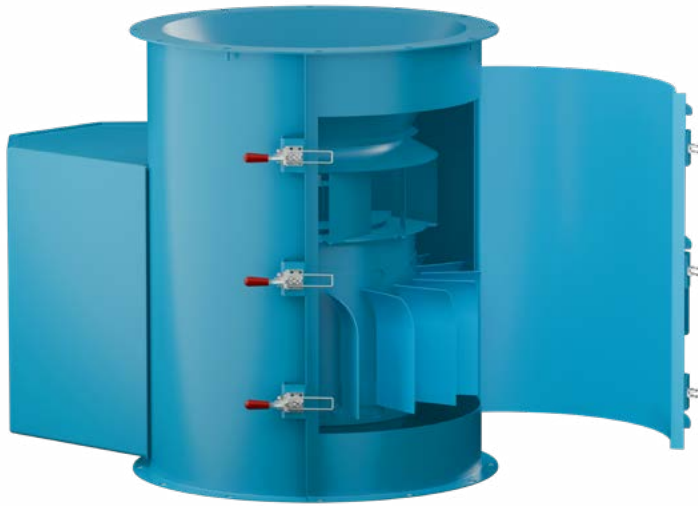


Heavy-duty ball
bearings provide
door support



Model QSL Swingout

CLAMSHELL FANS



Model TSL with
Single Door Clamshell

Axial, Inline Centrifugal and Mixed Flow Fans

Tubeaxial, vaneaxial and adjustable pitch vaneaxial clamshell fans are available in sizes 21 through 60. Refer to Catalog AX200 for Tubeaxial Fans, Catalog AX100 for Vaneaxial Fans and Catalog AX300 for Adjustable Pitch Vaneaxial Fans.

TSL tubular centrifugal clamshell fans are available in sizes 122 through 270 (single door) and sizes 300 through 445 (double door) in Class I, II and III construction. Refer to Catalog 1001 for TSL Tubular Centrifugal Inline Fans.

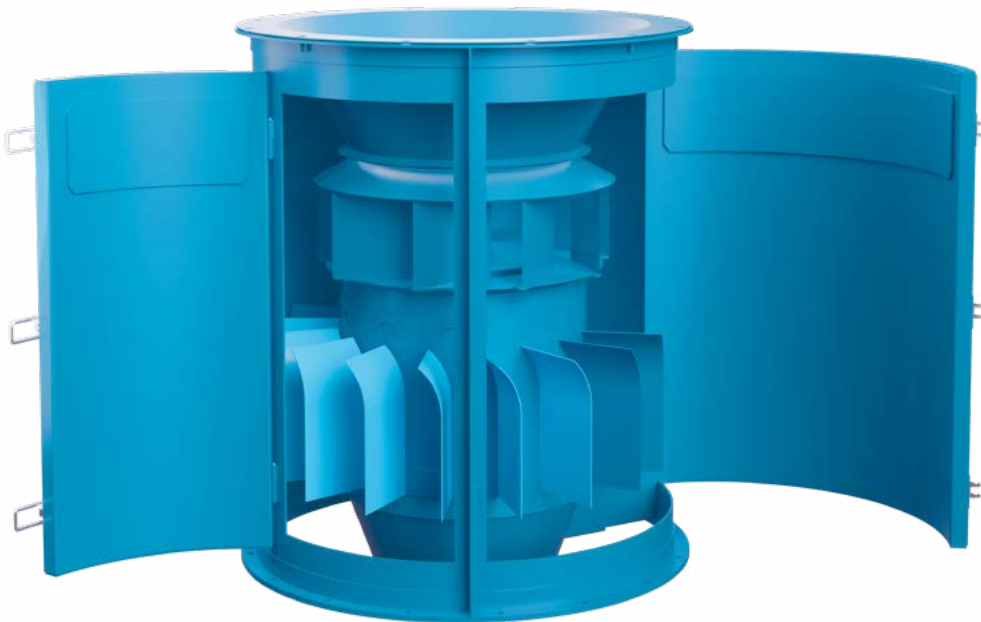
Model QSL Mixed Flow Fan combines the benefits of axial flow and centrifugal flow fans. Clamshell construction is available for vertical mounting only. Available on sizes 122 through 270 (single door) and sizes 300 through 445 (double door). Refer to Catalog 1060 for QSL Mixed Flow Fans.

Models Available with Clamshell Construction

- ATAD
- QSL / QSLR / QSLSH
- TCTA / TCTS
- TCVA / TCVS
- TCVX
- TSL

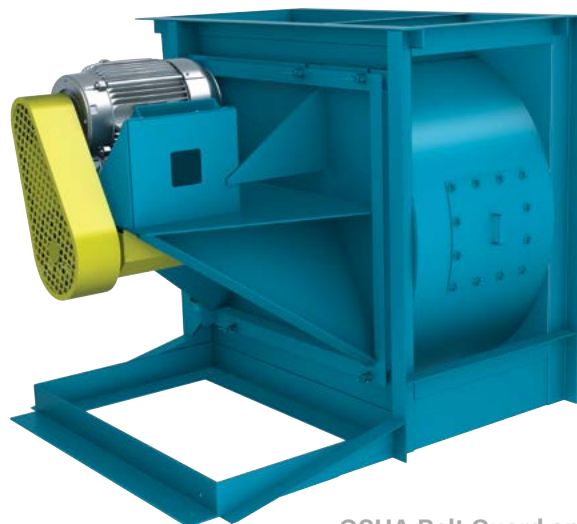
Construction Features

- Heavy-duty flanged ball bearing hinge system provides door support without the need for a track.
- 200,000 hour L-50 average life bearings are standard.
- Housing is continuously welded, heavy-gauge construction.
- Extra heavy T-handles to lock doors for a tight seal.

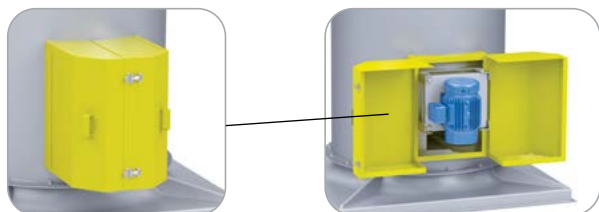


Model TSL with
Double Door Clamshell

- 1 Steel, aluminum and stainless steel construction available.
- 2 FRP plastic inlet funnels available when aluminum is not suitable for spark resistant construction.
- 3 All clamshell fans feature removable bearing covers as standard. Removable bearing cover plates are optional on axial swingout fans.
- 4 Special coatings are available for corrosion resistance.
- 5 Quick open and bolted access doors allow for easy inspection. The quick open access door is specifically designed for fans that require frequent inspection.
- 6 OSHA belt guards are available for all swingout and clamshell fans.
- 7 Optional pivot motor base for constant belt tension available on scroll swingout fans.
- 8 Optional two-piece clamshell weather cover available on axial and tubular centrifugal swingout fans.



OSHA Belt Guard and Bolted on Access Door on Model BC-SW Swingout



Clamshell Motor Covers Provide Direct Access to a Fan's Motor Without Having to Remove the Motor Cover



Centrifugal Swingout Arrangement 9SS



Pivot motor base for Arrg. 9SS



INDUSTRIAL PROCESS AND COMMERCIAL VENTILATION SYSTEMS

CENTRIFUGAL FANS | UTILITY SETS | PLENUM & PLUG FANS | INLINE CENTRIFUGAL FANS

MIXED FLOW FANS | TUBEAXIAL & VANEAXIAL FANS | WALL MOUNTED FANS | ROOF VENTILATORS

CENTRIFUGAL ROOF & WALL EXHAUSTERS | CEILING VENTILATORS | GRAVITY VENTILATORS | DUCT BLOWERS

RADIAL BLADED FANS | RADIAL TIP FANS | HIGH EFFICIENCY INDUSTRIAL FANS | PRESSURE BLOWERS

LABORATORY EXHAUST FANS | FILTERED SUPPLY FANS | MANCOOLERS | FIBERGLASS FANS | CUSTOM FANS



TWIN CITY FAN & BLOWER
WWW.TCF.COM

5959 TRENTON LANE N. | MINNEAPOLIS, MN 55442 | PHONE: 763-551-7600 | FAX: 763-551-7601

©2000-2025 Twin City Fan Companies, Ltd., Minneapolis, MN. All rights reserved. Catalog illustrations cover the general appearance of Twin City Fan & Blower products at the time of publication and we reserve the right to make changes in design and construction at any time without notice.